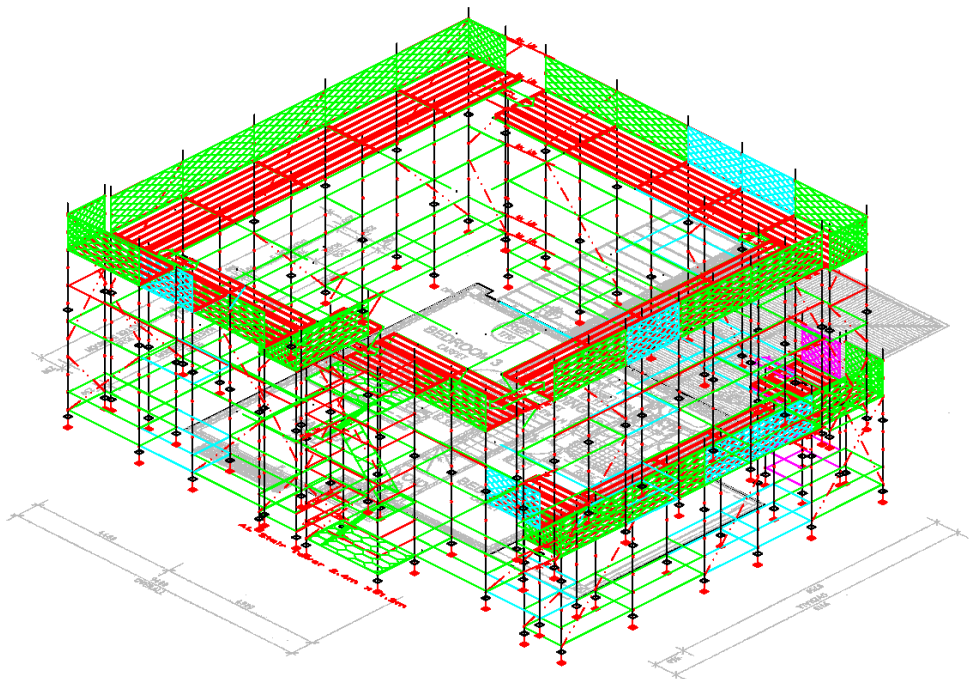
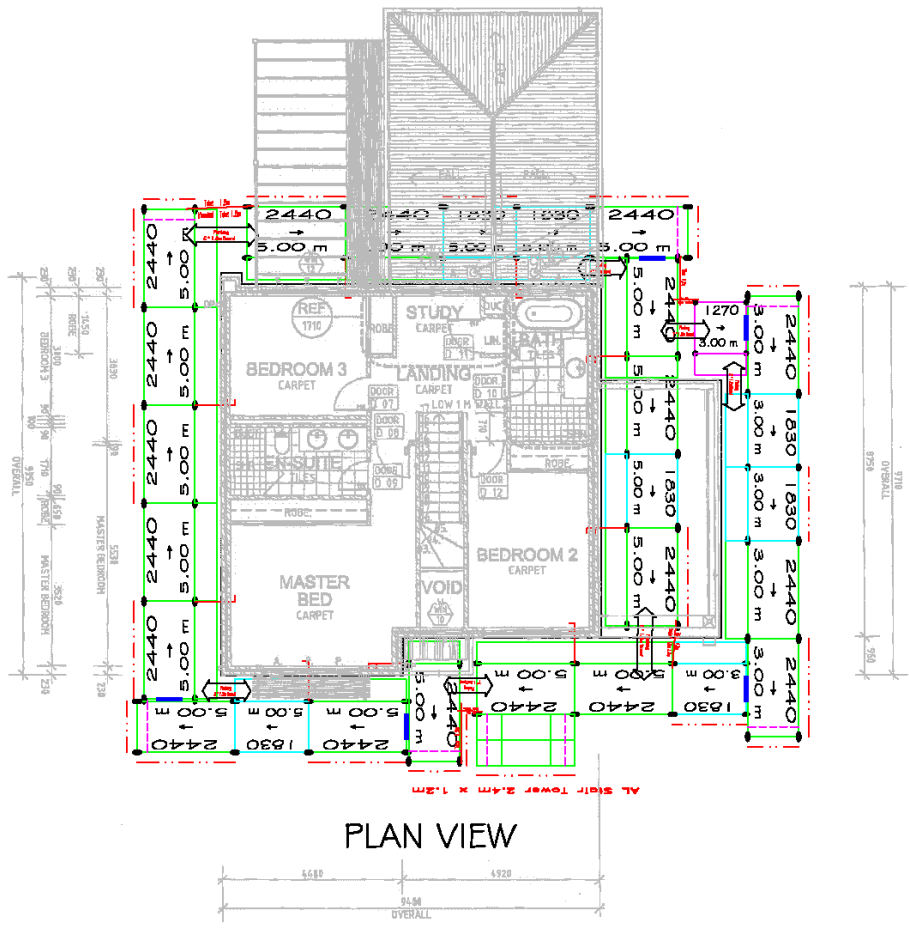


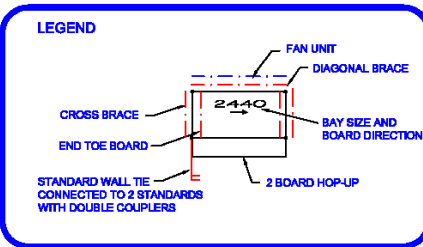
REAR VIEW



ISOMETRIC VIEW



PLAN VIEW



- NOTES**
1. In this particular scaffolding, any 2 platforms will be utilized at one time as heavy duty working platforms. The remaining platforms must not be used.
 2. Persons who erect or dismantle scaffolding components must comply with their local statutory authorities scaffolding requirements and be properly trained.
 3. This Scaffolding System is rated Heavy Duty with a maximum allowable distributed live load of 675 kg per bay (Unless noted otherwise). Refer to AS/NZS 1576.1 for duty specifications.
 4. This drawing complies with AS/NZS 4576 Guidelines for Scaffolding. For site specific information, please contact our design office.